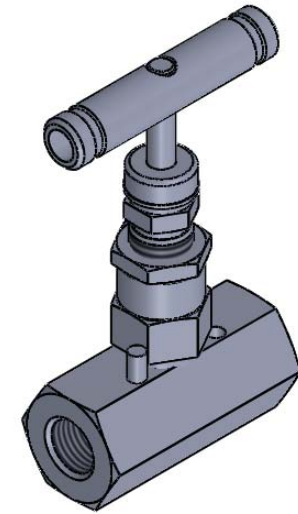
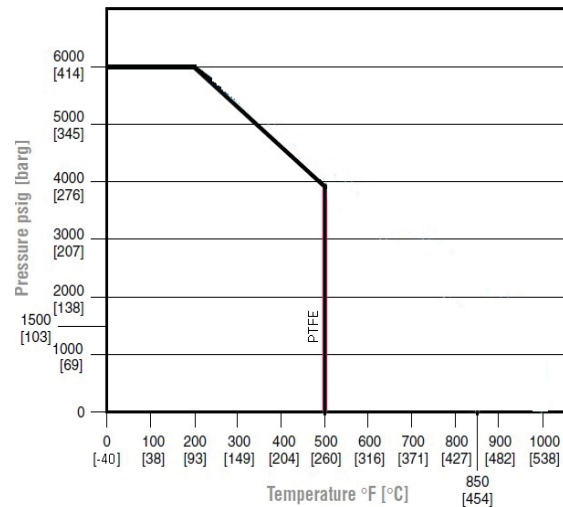


SECTION A-A



ITEM NO.	PART NUMBER	DESCRIPTION	QTY.
1	BODY	ASTM A 479-316	1
2	GLAND BODY	ASTM A 479-316	1
3	RETAINER	ASTM A 479-316	1
4	BACKUP RING	DELRIN	1
5	PACKING	TEFLON	2
6	WASHER	ASTM A 479-316	2
7	SPINDLE	ASTM A 479-316	1
8	LOCK NUT	ASTM A 479-316	1
9	DUST CAP	PLASTIC	1
10	HANDLE	SS	1
11	GRUB SCREW	SS	1
12	DOWEL PIN	SS	1
13	BALL TIP	SS440C	1



NOTES:-

- ALL DIMENSIONS ARE IN MM. UNLESS SPECIFIED.
- UNSPECIFIED GEN TOL. : ±0.5 MM MAX.
- UNSPECIFIED GEN ANG. TOL. : ±0.1° MAX.
- UNSPECIFIED ASLY. TOL. : ±2MM MAX.
- UNSPECIFIED TOL. FOR FORGING : ±2 MM.(IF APPLICABLE)
- MAX. WORKING PRESSURE : 6000 PSI

REV.	DESCRIPTION	DRN	CHD	APPD	DATE

TITLE:- 1/4" NPTF X 1/4" NPTF HB SERIES NEEDLE VALVE

DRN.	PS	SCALE - N.T.S	REV.	00
CHD.	SS	DATE - 24.03.18	PROJ.	
APPD.	DM	DRG.NO.- PNV-H-S-04-FF-SG		



PANAM ENGINEERS LTD
GUJARAT - INDIA

SHEET
1
OF
1