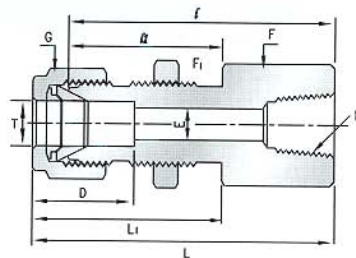


# Bulkhead Female Connector



## Imperial Range:

Part No.	Tube O. D. T in	P * (NPT)	E Min	Width across flat			D	ℓ	ℓ <sub>1</sub>	L	L <sub>1</sub>	Panel Hole Drill Size	Panel Max. Thickness
				F	F <sub>1</sub>	G							
				in	in	in							
PBFC-02-02	1/8	1/8	2.28	9/16	1/2	7/16	12.70	38.10	24.63	44.70	31.24	8.33	12.70
PBFC-04-02	1/4	1/8	4.82	5/8	5/8	9/16	15.24	39.63	26.16	46.99	33.52	11.50	10.16
PBFC-04-04	1/4	1/4	4.82	3/4	5/8	9/16	15.24	44.45	26.16	51.81	33.52	11.50	10.16
PBFC-06-04	3/8	1/4	7.11	3/4	3/4	11/16	16.76	47.75	29.46	55.11	36.83	14.68	11.17
PBFC-08-06	1/2	3/8	10.41	15/16	15/16	7/8	22.86	51.56	31.75	61.72	41.91	19.44	12.70
PBFC-08-08	1/2	1/2	10.41	1-1/16	15/16	7/8	22.86	56.38	31.75	66.54	41.91	19.44	12.70
PBFC-12-12	3/4	3/4	15.74	1-1/4	1-3/16	1-1/8	24.38	65.35	38.80	75.51	47.21	25.79	16.76

## Metric Range:

Part No.	Tube O. D. T mm	P * (NPT)	E Min	Width across flat			D	ℓ	ℓ <sub>1</sub>	L	L <sub>1</sub>	Panel Hole Drill Size	Panel Max. Thickness
				F	F <sub>1</sub>	G							
				mm	mm	mm							
PBFC-M06-02	6	1/8	4.8	15.8	15.8	14	15.3	39.50	27.7	46.90	35.00	11.5	10.2
PBFC-M06-04	6	1/4	4.8	19.0	16.0	14	15.3	44.40	26.2	51.80	33.60	11.5	10.2
PBFC-M08-04	8	1/4	6.3	19.0	17.4	16	16.2	46.35	28.4	53.85	35.55	13.1	11.2
PBFC-M12-08	12	1/2	9.5	27.0	24.0	22	22.8	56.40	31.8	66.50	41.90	19.5	12.7

All dimensions are in millimeters unless otherwise specified. Dimensions are for reference only, subject to change.