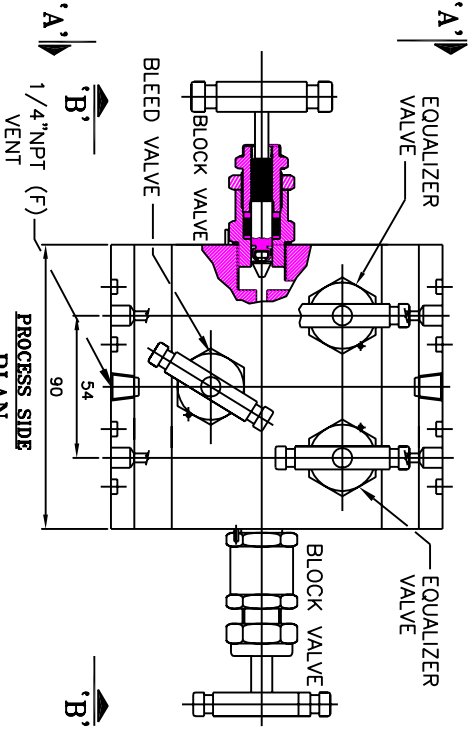


VIEW - 'BB'
INSTRUMENT SIDE
4NOS 12.5mm DIA MOUNTING HOLE.



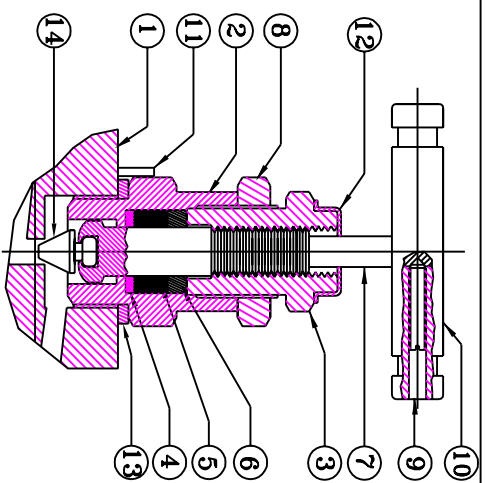
PROCESS SIDE
VIEW - 'AA'

PRESSURE RATING :

TEMP.	C.S.	S.S.	ORIFICE	Cv
ROOM T	6000 PSI	6000 PSI		
500°F	4000 PSI	4000 PSI	3.5 mm.	0.24 MAX.
1000°F	1500 PSI	1500 PSI		

PANAM 5 VALVE MANIFOLD DESIGNED FOR REMOTE MOUNTING, CONNECTING SYSTEM IMPULSE LINES & TRANSMITTERS. THIS MANIFOLD CONSISTS TWO FLANGE CONNECTIONS WITH TEFLON/VITON O-RING PACKING ON 54mm (2-1/8") CENTERS TO SUIT THE INLET CONNECTION OF THE INSTRUMENT. THE MANIFOLD PROVIDES TWO INSTRUMENT ISOLATING VALVES, TWO EQUALIZER VALVES & ONE BLEED VALVE. (FOR TEST FACILITIES)

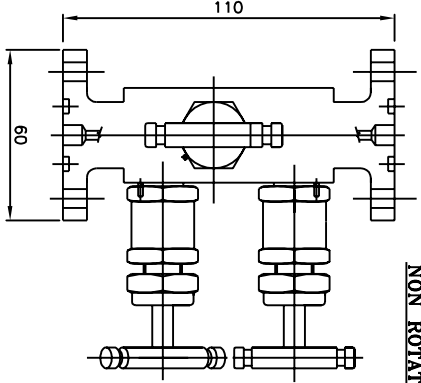
NOTE:-1) DIMENSIONS ARE IN MM.FOR REFERENCE ONLY, SUBJECT TO CHANGE.
2) APPROXIMATE WEIGHT = 3.94 KGS. (8.7 LBS)



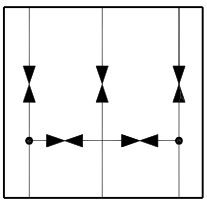
NON ROTATING VEE TIP:

S.NO.	DESCRIPTION	QTY.	MATERIAL
14	NON ROTATING VEE TIP	5	TITANIUM/17-4 PH
13	WASHER	5	A479-316/A-105
12	DUST CAP	5	PLASTIC LD.
11	LOCK PIN	5	A479-316/A-105
10	HANDLE	5	A276-304/A-105
9	GRUB SCREW	5	STEEL
8	LOCK NUT	5	A479-316/A-105
7	SPINDLE	5	A276-316
6	PACKING WASHER	5	A479-316/A-105
5	PACKING	10	PTFE/GRAFOIL
4	WASHER	5	A479-316/A-105
3	GLAND RETAINER	5	A479-316/A-105
2	BONNET	5	A479-316/A-105
1	BODY	1	A479-316/A-105

MATERIAL OF CONSTRUCTIONS



VIEW - 'AA'



SCHEMATIC

NON ROTATING VEE TIP :

NON ROTATING VEE TIP PREVENTS GALLING & PROMOTES REPETITIVE SHUT-OFF. OPTIONAL BALL & PACKING MATERIAL IS AVAILABLE FOR HIGH TEMP. RATING 1000°F @6000 PSI (GRAFOIL PACKING). HARD STELLITE/TITANIUM VEE STEM & PTFE PACKING. (STANDARD).

FEATURES :

ONE PIECE BODY CONSTRUCTION FOR HIGH STRENGTH & FULL SAFETY. NO WELDING. 316 S.S./Monel 400 BODY CONSTRUCTION FOR SUPERIOR CORROSION RESISTANCE. 100% TESTED AT ALL SEATS. CENTER LINE DIMENSION 54mm (2-1/8") FOR PROPER PORT ALIGNMENT.

MANIFOLD SELECTION INFORMATION DATA :

PRESSURE & TEMPERATURE RATING ARE SELECTED FROM ANSI B16.34 FOR STANDARD CLASS VALVES BASED ON ANSI B16-CLASS 2500 OPTIONAL SOUR GAS SERVICE CONFIRMS TO NACE STD. MR-01-75

TITLE:- 5VALVE MANIFOLD (FLANGE TO FLANGE)

DRN.	CDC	SCALE	N.T.S.
CHD.	ET	DATE	13-04-02
APPD.	JG	DRG.NO.:	5VM-8-SS-H

PANAM ENGINEERS
AN ISO 9001 : 2000 COMPANY
MUMBAI - INDIA