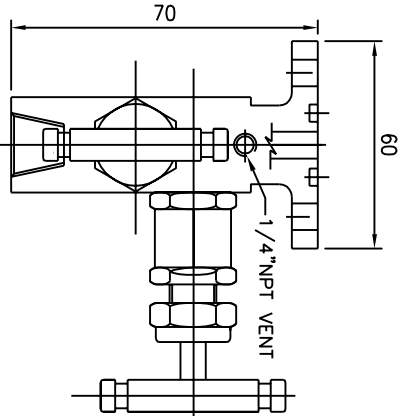
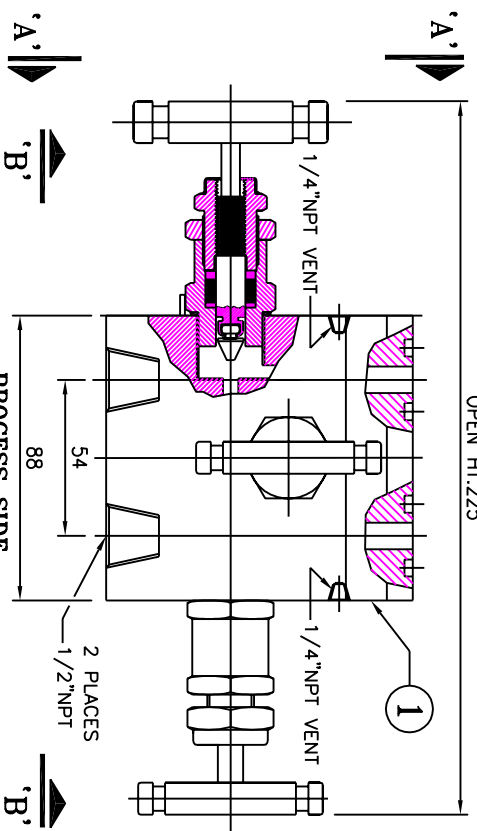


S.NO.	DESCRIPTION	QTY.	MATERIAL
14	NON ROTATING VEE TIP	3	TITANIUM/17-4 PH
13	WASHER	3	A479-316 / A-105
12	DUST CAP	3	PLASTIC LD.
11	LOCK PIN	3	A479-316 / A-105
10	HANDLE	3	A276-304/A-105
9	GRUB SCREW	3	STEEL
8	LOCK NUT	3	A479-316 / A-105
7	SPINDLE	3	A276-316
6	PACKING WASHER	3	A479-316 / A-105
5	PACKING	3	PTFE/GRAFOL
4	WASHER	3	A479-316 / A-105
3	GLAND RETAINER	3	A479-316 / A-105
2	BONNET	3	A479-316 / A-105
1	BODY	1	A479-316 / A-105

MATERIAL OF CONSTRUCTIONS

VIEW - 'BB'
INSTRUMENT SIDE

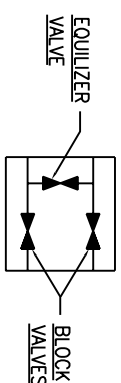


PRESSURE RATING :

TEMP.	C.S.	S.S	ORFICE	Cv
ROOM T	6000 PSI	6000 PSI		
500°F	4000 PSI	4000 PSI	3.5 mm.	0.24 MAX.
1000°F	1500 PSI	1500 PSI		

PANAM 3 VALVE MANIFOLD T-TYPE PIPE TO FLANGE CONNECTION DESIGN FOR CONNECTING SYSTEM IMPULSE LINES AND TRANSMITTERS. THIS MANIFOLD CONSISTS TO 1/2" NPT FEMAL CONNECTIONS ON 54mm.(2-1/8") CENTERS AND OF ONE EQUALIZER VALVE AND TWO BLOCK VALVES. 1/4"NPT PURGE CONNECTIONS (2) OPTIONAL.

NOTE:-1) DIMENSIONS ARE IN MM.FOR REFERENCE ONLY, SUBJECT TO CHANGE.
2) APPROXIMATE WEIGHT= 1.8 KGS. (3.98 LBS)



NON ROTATING BALL TIP :

NON ROTATING VEE TIP PREVENTS GALLING & PROMOTES REPETITIVE SHUT-OFF. OPTIONAL BALL & PACKING MATERIAL IS AVAILABLE FOR HIGH TEMP. RATING 1000°F @6000 PSI (GRAPHOLIT PACKING). HARD STELLITE/TITANIUM VEE STEM & PTFE PACKING. (STANDARD).

FEATURES :

ONE PIECE BODY CONSTRUCTION FOR HIGH STRENGTH & FULL SAFETY, NO WELDING. 316 S.S./Monel 400 BODY CONSTRUCTION FOR SUPERIOR CORROSION RESISTANCE. 100% TESTED AT ALL SEAMTS. CENTER LINE DIMENSION 54mm (2-1/8") FOR PROPER PORT ALIGNMENT.

MANIFOLD SELECTION INFORMATION DATA :

PRESSURE & TEMPERATURE RATING ARE SELECTED FROM ANSI B16.34 FOR STANDARD CLASS VALVES BASED ON ANSI B16-CLASS 2500 OPTIONAL SOUR GAS SERVICE CONFIRMS TO NACE STD. MR-01-75

TITLE:- 3- VALVE MANIFOLD (PIPE TO FLANGE)

DRN.	MT	SCALE	N.T.S.
CHD.	ET	DATE	19.07.2001
APPD.	JP	DRG.NO.:	3VM-8-SS-T

PANAM ENGINEERS
AN ISO 9001 : 2000 COMPANY
MUMBAI - INDIA